



Space Vector PWM Controlled ZSource BLDC Drive

M V Giridhar¹Talati Dhruvesh² A GouthamVenkata Sai³ K Anil Kumar⁴ K Guna Sekhar⁵

Dept. of EEE, KL University, Vaddeswaram, Guntur, A.P., India

ABSTRACT: Space Vector Modulation (SVM) Technique has become the most popular and important PWM technique for three phase Voltage Source Inverters for the control of AC Induction, Brushless DC, Switched Reluctance and Permanent Magnet Synchronous Motors. Z-Source Inverters have the ability to boost the dc link voltage, thus increasing the output ac voltage beyond the values reached by conventional inverters. The enhanced ratio from ac output voltage to dc link voltage is possible due to an impedance network connected between the dc power supply and the main converter. In this paper space vector is implemented for z source inverter and brushless dc motor is fed by zsource inverter. The simulation results are supported with SIMULINK.

KEYWORDS: z-source, space vector, low harmonics, bldc

I.INTRODUCTION

Voltage Source Inverters (VSI) controlled by Space Vector Modulators (SVM) produce output voltages whose fundamental amplitude is given by[1]

$$V_s = m \cdot V_{dc}$$

Where M- modulation index

V_{dc}- DC link voltage

The maximum amplitude is given by

$$V_s = 0.57 \cdot V_{dc} \text{ when } m=1$$

On the other hand, Z-Source Inverters (ZSI) produce output voltages that are higher than those obtained by the Voltage source inverter

$$V_{zs,max} > V_{s,max}$$

with the same V_{DC}. This is the main advantage of this configuration.

The intermediate circuit of the ZSI is composed by two inductors, L_z, two capacitors, C_z, and a diode D_z, see Fig. 2. Assuming that both inductors have the same inductance, and both capacitors have the same capacitance, the order of the differential equations can be reduced in two. The state variables of the intermediate circuit are i_z and v_z. The inverter is a two-level VSI formed by six IGBTs. The load is a three phase RL circuit.

International Journal of Advanced Research in Electrical, Electronics and Instrumentation Engineering

(An ISO 3297: 2007 Certified Organization)

Vol. 3, Issue 6, June 2014

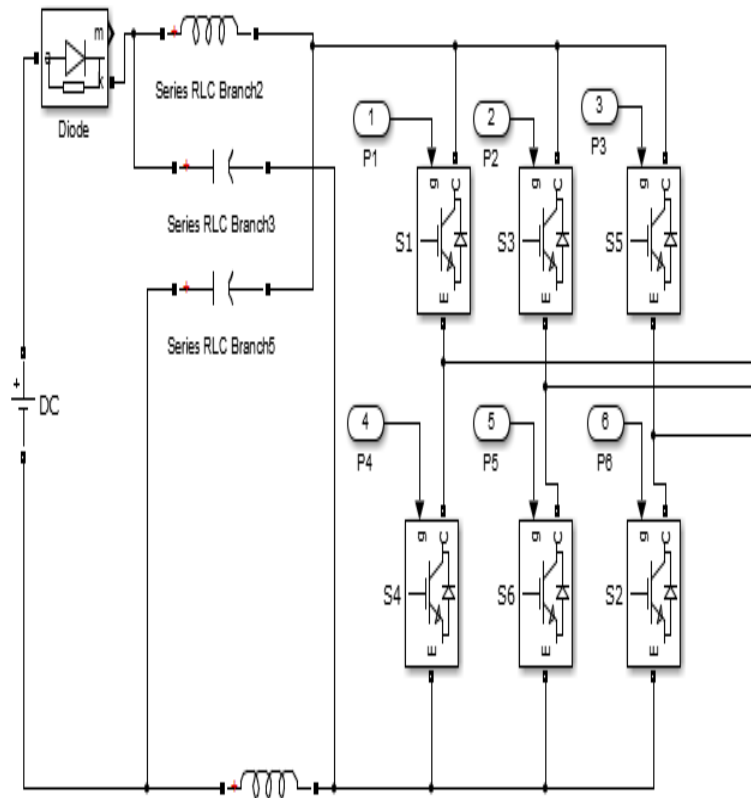


Fig.1 Z source three phase VSI

II. SPACE VECTOR PULSE WIDTH MODULATION

Space vector modulation is a PWM control algorithm for multi-phase AC generation, in which the reference signal is sampled regularly; after each sample, non-zero active switching vectors adjacent to the reference vector and one or more of the zero switching vectors are selected for the appropriate fraction of the sampling period in order to synthesize the reference signal as the average of the used vectors. The topology of a three-leg voltage source inverter is Because of the constraint that the input lines must never be shorted and the output current must always be continuous a voltage source inverter can assume only eight distinct topologies. Six out of these eight topologies produce a nonzero output voltage and are known as non-zero switching states and the remaining two topologies produce zero output voltage and are known as zero switching states.

The space vector modulation (SVM) technique is more popular than conventional technique because of the following excellent features:

- It achieves the wide linear modulation range associated with PWM third harmonic injection automatically.
- It has lower base band harmonics than regular PWM or other sine based modulation methods, or otherwise optimizes harmonics.
- 15% more output voltage than conventional modulation, i.e. better DC-link utilization.
- More efficient use of DC supply voltage.
- SVM increases the output capability of SPWM without distorting line-line output voltage waveform.
- Advanced and computation intensive PWM technique.
- Higher efficiency.
- Prevent un-necessary switching hence less commutation losses.



International Journal of Advanced Research in Electrical, Electronics and Instrumentation Engineering

(An ISO 3297: 2007 Certified Organization)

Vol. 3, Issue 6, June 2014

- A different approach to PWM modulation based on space vector representation of the voltages in the α - β plane.

STEPS TO IMPLEMENT SVPWM:

1) The sector in which the tip of the reference sector is situated is to be determined from the instantaneous phase references V_a^* , V_b^* and V_c^*

- V_a^* , V_b^* , V_c^*

The three phase voltages are transformed to two phase using parks transformation.

- $v_\alpha, v_\beta \Rightarrow \Theta = \tan^{-1}(v_\beta/v_\alpha)$
- $\alpha = \Theta - k(60^\circ)$; k such that $\alpha < 60^\circ$
- Sector number = k + 1

2) Computation of T_1 and T_2 ; here lookup tables are needed to know the values of $\sin(60^\circ - \alpha)$ and $\sin \alpha$

3) Determination of switching vectors.

Using the corresponding sector information the actual switching time for each inverter leg is generated from the combination of effective times and zero sequence time. Equating volt-seconds along the α -axis:

$$(IV_{sr} \cos \alpha) * T_s = V_{dc} * T_1 + (V_{dc} \cos 60^\circ) * T_s$$

Equating volt-seconds along the β -axis:

$$(IV_{sr} \sin \alpha) * T_s = (V_{dc} \sin 60^\circ) * T_2$$

Solving the above two simultaneous equations, one gets:

$$T_1 = \frac{|\mathbf{V}_{sr}| T_s \sin(\pi/3 - \alpha)}{V_{dc} \sin(\pi/3)}$$

$$T_2 = \frac{|\mathbf{V}_{sr}| T_s \sin \alpha}{V_{dc} \sin(\pi/3)}$$

$|\mathbf{V}_{sr}|$ represents the length of the reference Vector and is measured from the start of the vector.

4) Assert the appropriate control signals to affect the required switching action.



International Journal of Advanced Research in Electrical, Electronics and Instrumentation Engineering

(An ISO 3297: 2007 Certified Organization)

Vol. 3, Issue 6, June 2014

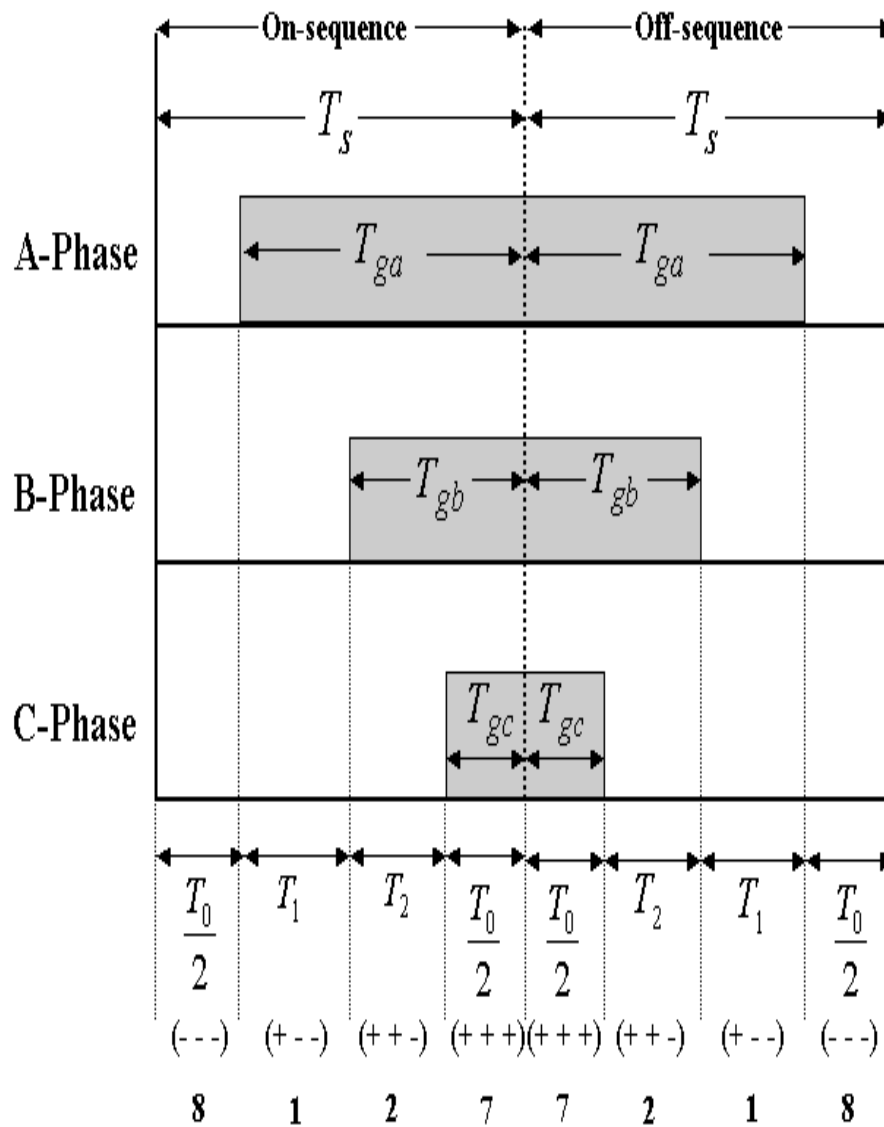


Fig.2 Switching sequence sector 1[2]

International Journal of Advanced Research in Electrical, Electronics and Instrumentation Engineering

(An ISO 3297: 2007 Certified Organization)

Vol. 3, Issue 6, June 2014

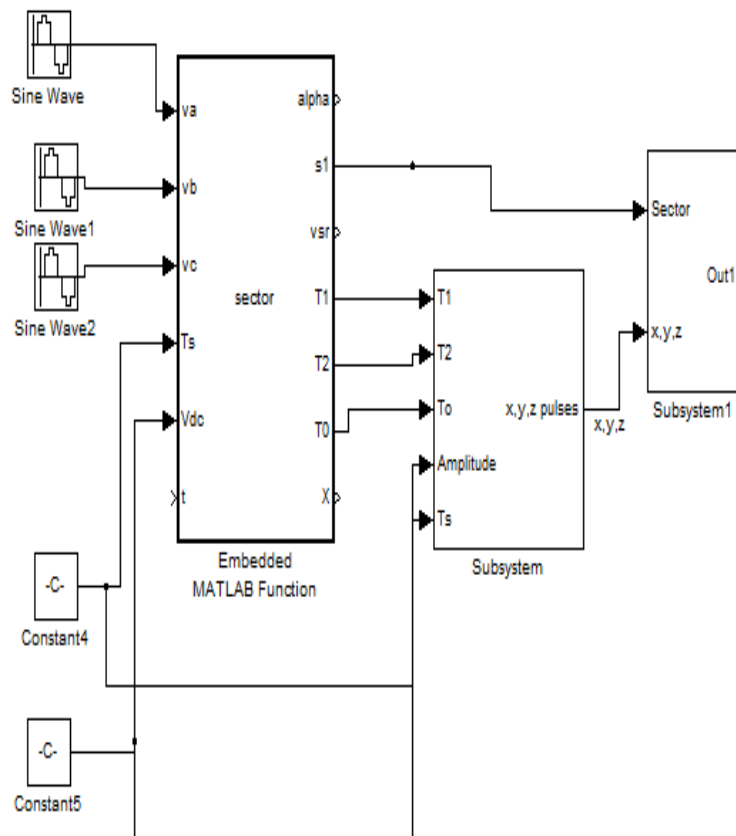


Fig.3 space vector pwm implementation

III.MODELLING OF BLDC MOTOR

The modelling is carried based on assumptions that

- the induced currents in the rotor due to stator harmonics are neglected.
- Iron and stray losses are also neglected.

Motor modelling is done based on derivations provided in[3]

The stator voltage equations in terms of electrical constants are

$$= + p +$$

Where R_s - Rotor resistance

L_a, L_b, L_c – Self inductance of each phase windings

L_m – Mutual inductance

i_{as}, i_{bs}, i_{cs} – Currents in stator windings

Copyright to IJAREEIE



International Journal of Advanced Research in Electrical, Electronics and Instrumentation Engineering

(An ISO 3297: 2007 Certified Organization)

Vol. 3, Issue 6, June 2014

e_{as} , e_{bs} , e_{cs} – induced back emf's.

The electromagnetic induced emfs is given as

$$e_{as} = f_{as}(\Theta) \lambda_p \omega_m$$

$$e_{bs} = f_{bs}(\Theta) \lambda_p \omega_m$$

$$e_{cs} = f_{cs}(\Theta) \lambda_p \omega_m$$

where $f(\Theta)$ indicates that induced emf is dependent on rotor position

The electromagnetic torque is given by

$$T_e = [e_{as}i_{as} + e_{bs}i_{bs} + e_{cs}i_{cs}] / \omega_m \text{ (N-m)}$$

Speed of motor is obtained as

$$\omega_m = \int ((T_e - T_l - B\omega_m) / J)$$

Where ω_m – rotor speed in mechanical rad/s

B – friction coefficient

J – Inertia of motor shaft

IV.SIMULATION RESULTS

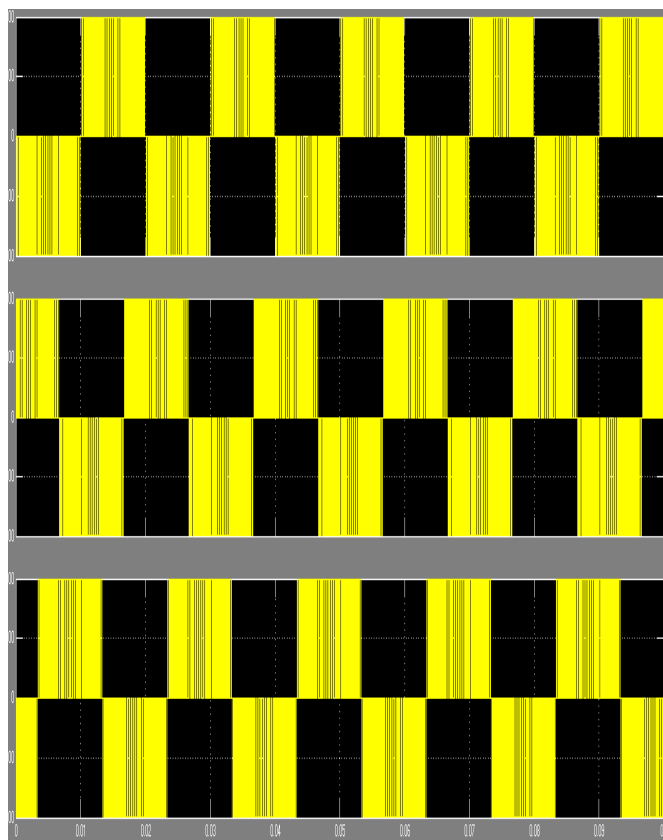


Fig.4 Three phase voltages of Z-Source inverter



International Journal of Advanced Research in Electrical, Electronics and Instrumentation Engineering

(An ISO 3297: 2007 Certified Organization)

Vol. 3, Issue 6, June 2014

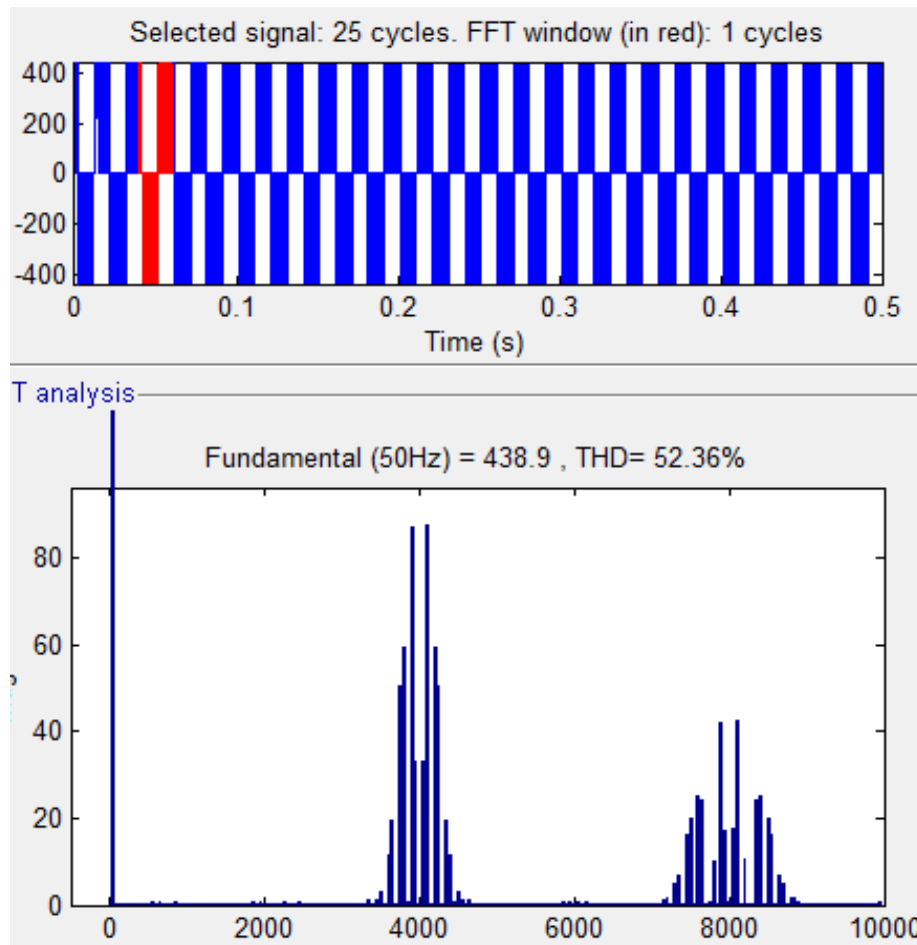


Fig.5 THD Analysis of Z-source inverter



International Journal of Advanced Research in Electrical, Electronics and Instrumentation Engineering

(An ISO 3297: 2007 Certified Organization)

Vol. 3, Issue 6, June 2014

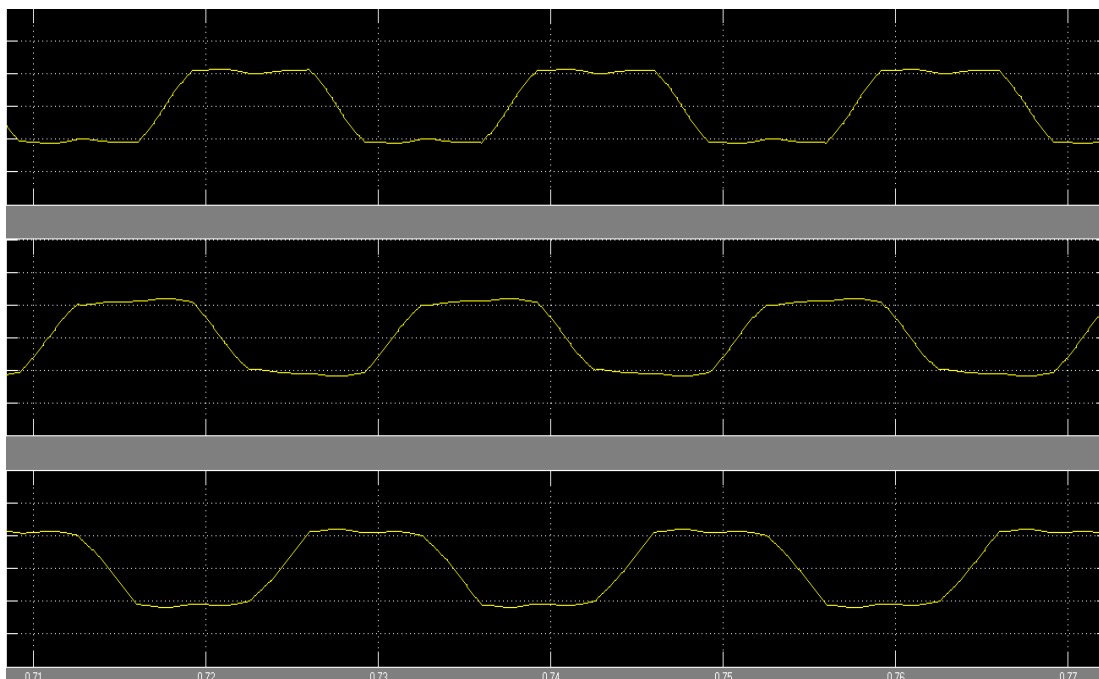


Fig6 Trapezoidal Back Emf

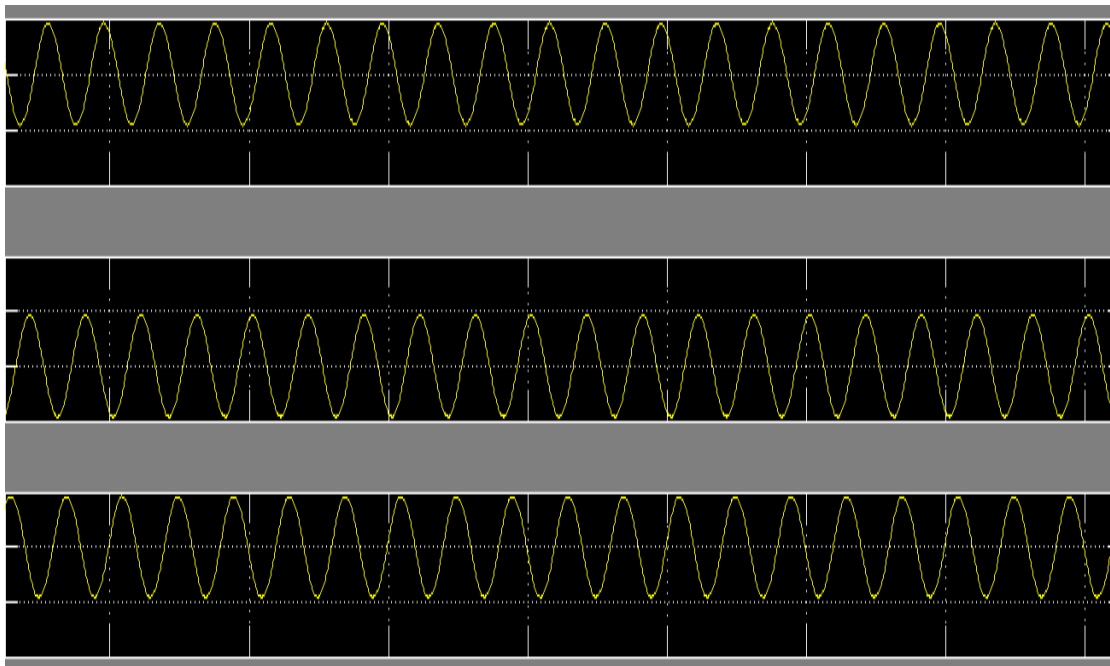


Fig7. Stator Currents



International Journal of Advanced Research in Electrical, Electronics and Instrumentation Engineering

(An ISO 3297: 2007 Certified Organization)

Vol. 3, Issue 6, June 2014

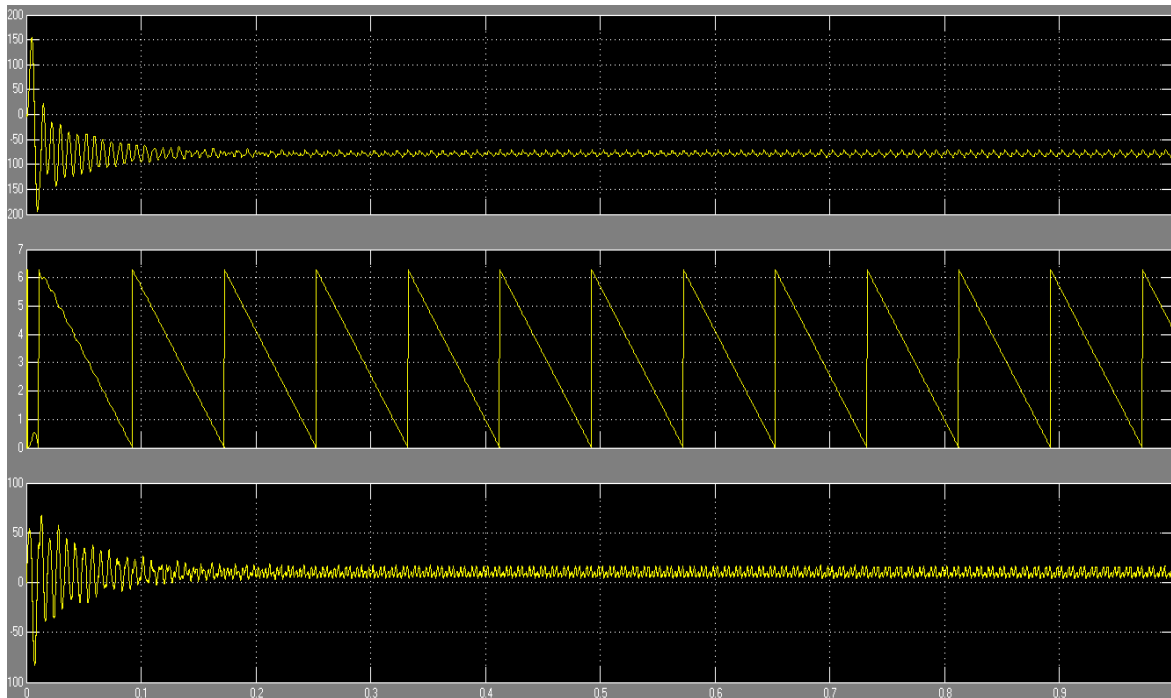


Fig8. Speed, Rotor position, Electromagnetic torque

V.CONCLUSION

The z source inverter produces more output voltage than conventional voltage source inverters the same is observed in this paper. Space vector pwm is implemented for zsource inverter. The brushless dc motor is fed by z source inverter. The performance characteristics of brushless dc motor like trapezoidal emf, electromagnetic torque, speed, rotor position are obtained.

REFERENCES

- [1] N. Muntean, L. Tutelea, I. Boldea "A Modified Carrier – Based PWM Modulation Technique in Z - Source Inverters" *IEEE Trans. Ind. Appl.*, vol. 43, March-April 2007, pp. 704-710.
- [2] Bengi Tolunay "Space Vector Pulse Width Modulation for Three-Level Converters - a LabVIEW Implementation", UPTC E12001.
- [3] R. Krishnan, "Permanent Magnet Synchronous and Brushless DC Motor Drives", CRC Press, 2010.
- [4] R. Krishnan, "Electric Motor Drives Modelling, Analysis and Control", Prentice Hall, 2001.
- [5] NedMohan, Undeland, Riobbins "Power electronic converter, applications and design" ,Wiley Student Edition.
- [6] Arturo A. Arias M. and Wilfried Hofmann "Carrier-Based PWM for Z-Source Inverters" *IEEE Trans. Ind. Appl.*, vol. 49, 2012, pp. 504-510.
- [7] N. Muntean, L. Tutelea, I. Boldea "A Modified Carrier – Based PWM Modulation Technique in Z - Source Inverters" *IEEE Trans. Ind. Appl.*, vol. 43, March-April 2007, pp. 704-710