

DC-DC Converter with Input Current Ripple Reduction for Battery Charging Application

V.V.Rajasegharan, Dr.L.Premalatha, B.Vishnupriya

Department of Electrical and Electronics Engineering, Anand Institute of Higher Technology, Chennai, India

Department of Electrical and Electronics Engineering, Anand Institute of Higher Technology, Chennai, India

Department of Electrical and Electronics Engineering, Anand Institute of Higher Technology, Chennai, India

ABSTRACT— For the growing energy distribution challenges, active distribution networks are found to be an ideal choice. With the rapid development of semiconductor and power electronic techniques, the dc distribution system is ready as an alternative scheme to the existing ac distribution systems due to its high power quality and reliability performance. Half Bridge Converter (HBC) or Full Bridge Converter were the commonly used topologies. Among them, Half bridge converter has significant role in power electronics and drives application. The converter can be proposed in different ways according to the area of application. A modification is made with the existing HBC by the addition of LCL filter at input side to reduce the inrush current, voltage stress on switches and di/dt losses. The main advantage of employing the proposed converter is to reduce the input current ripple without adding a large input filter. Hence the above mentioned HBC with LCL filter is the proposed topology which can shape the input current waveform to a non pulsating fashion.

KEYWORDS: Half Bridge Converter, LCL Filter, Battery charger, Current ripple reduction.

I.INTRODUCTION

The recent advancement of power device technology mainly by the growth of MOSFETs has made possible to improve performance of power electronic devices. MOSFET are popularly used due to its higher frequency, high impedance, low voltage stress and mainly consume less Dc power. Dc-Dc converters are widely used in industrial applications such as dc motor drives, office appliances and communication equipments [1].Dc-Dc converters are always essential to convert the dc bus voltage to different voltage levels for the load devices. Dc-Dc converters have high efficiency, high power density, high voltage gain and reduced ripple voltage. The common types of Dc-Dc converters are divided into two

types on how they transfer the energy. The energy can go from the input to the magnetic through load or the energy can be stored in the magnetic to be released later to the load [2,3]. In this paper among the Dc-Dc converters Half Bridge Converter (HBC) is widely used to have low voltage stress, low EMI and high efficiency performance. LCL Filter is added with the HBC to reduce the input current ripple. The experimental circuit investigated in this paper is Dc-Dc HBC converter, which allows the conversion of energy from higher level to lower level [4,5]. HBC with LCL filter is used to reduce the inrush current, decrease the switching losses and to achieve high frequency operation.

The size of LCL filter is reduced which is a main advantage. This is extensively used in many other different industrial applications such as battery charging applications, office applications and in telecommunication devices. The analysis was carried out on the Matlab – Simulink and the results confirm the reduction of input current ripple and reduced voltage spikes.

II.PROPOSED SYSTEM

A. Half Bridge Converter

Half Bridge Converter (HBC) is an attractive topology and used for middle power applications due to its simplicity. The half bridge converter is another form of an isolated forward converter. When the voltage on the power transistor in the single ended forward converter because too high, the half bridge converter is used to reduce the voltage stress. One of the main features of half bridge converter is it reduces the off stage voltage stress. Thus the cost and voltage stress is reduced.

The half bridge converter acts as a forward converter but it uses a bridge circuit which consists of two transistors to drive the transformer. The half bridge converter can be used as two back- back converter. The output of HBC is double to that of forward converter

DC-DC Converter with Input Current Ripple Reduction for Battery Charging Application

supplying the same input voltage. The half bridge converter originates from the step down converter. The equal valued capacitors C1 & C2 are inserted across the DC voltage in series forming the half VDC to primary winding of the transformer. The Dc voltage VDC/2 or – VDC/2 is applied. The MOSFET switches S1 and S2 conduct on the same duty cycle.

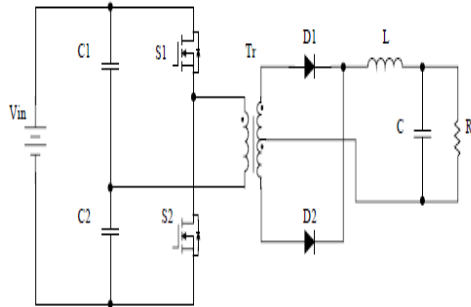


Fig 2.1 Half Bridge Converter

The two switches connect the transformer across the capacitors alternatively. Full Bridge Converter requires extra capacitor to eliminate the Dc bias in the transformer. But in the proposed Half Bridge Converter extra capacitor is not needed because the two transistors itself automatically correct the difference of the switching by changing their voltage.

Half Bridge Converter originates from the buck converter. The MOSFET voltage stress is half of the input voltage in HBC because the two capacitors share the input voltage evenly.

B. LCL Filter

The LCL filter is mostly used with a transformer in half bridge converter or full bridge converter. The LCL filter has been promising approach to reduce harmonic current, and to reduce the inrush current.

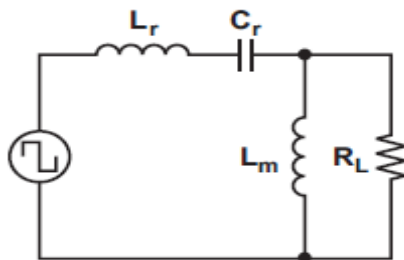


Fig 2.2 LCL Filter

The Dc characteristics of LCL filter can be determined by two resonant frequencies. One is low resonant frequency and another is high resonant frequency. L_r and C_r determine the higher resonant frequency and L_m and L_r determine the lower resonant frequency. The frequency is expressed as

$$f_0 = 1 / 2\pi\sqrt{L_r C_r}$$

$$Q = \sqrt{L_r C_r}$$

$$L_n = L_m / L_r$$

Where, f_0 – frequency

Q – Quality factor

L_n – ratio between magnetizing and resonant

Inductors L_m and L_r

Both these operating conditions reduce the input current ripple. The features of LCL filter are improved efficiency, smaller switching loss, narrow frequency variation range over wide range and less stress on rectifiers.

C. Half Bridge Converter with LCL Filter

The proposed system is half bridge converter with LCL filter. A capacitor is inserted between two primary windings of the transformer. It is used to reduce the input current ripple, and to achieve low voltage stress, lossless snubbing and voltage clamping features. The proposed converter reduces the Electromagnetic Interference problem also.

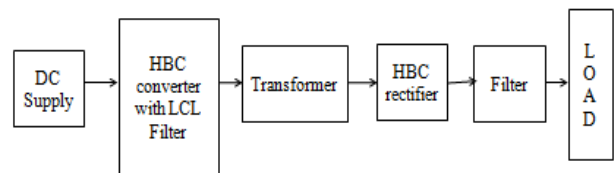


Fig 2.3 Block Diagram of Half Bridge Converter LCL Filter

A number of bridge type converters have been proposed. The size of the input filter can be reduced without adding a large input filter. The cost also reduced.

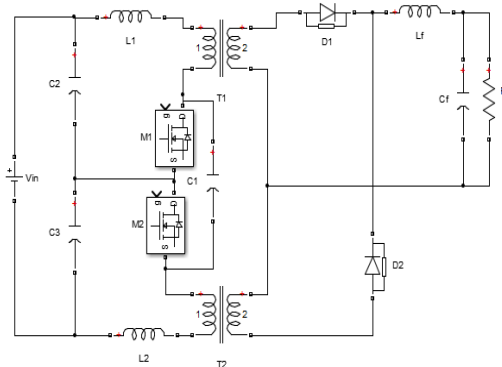


Fig 2.4 Half Bridge Converter LCL Filter

During turn off interval a non - zero input current is maintained and during turn on interval the input current is shared. The voltage spike across the switch is eliminated by absorbing the leakage inductance.

III. COMPARISON OF CONVENTIONAL AND PROPOSED CONVERTER

In the conventional system much effort has been focused on minimizing the voltage stress on switches, reducing switching losses and to achieve high frequency operation. In spite of that it has high dv/dt noise and high

DC-DC Converter with Input Current Ripple Reduction for Battery Charging Application

electromagnetic interference. It needs a large input filter to mitigate the noise problems which results in increasing the cost and reducing the system performance.

In the proposed half bridge converter with LCL filter the input current ripple is reduced by inserting a capacitor in between the primary windings of the transformer. Because of this it does not require a large input filter so the cost is reduced. Voltage spike across the switch is eliminated by absorbing the leakage inductance energy. The undesired harmonics can be reduced and the proposed half bridge converter shape the input current waveform to a non pulsating fashion.

IV. DESIGN CONSIDERATIONS

Instantaneous Output Voltage

$$V_{in}(t) = \sum_{n=1,3,5}^{\infty} 2V_s / n\pi \sin n\omega t$$

Fundamental Component $V_{in} = 2V_s / \pi \sin \omega t$

Rms value of voltage $V_{in(rms)} = \sqrt{2} V_s / \pi$

TABLE 1 : PARAMETERS FOR DESIGN

S.no	Parameters	Values
1.	Input voltage (V_{in})	360V
2.	Output Voltage (V_0)	12V
3.	Duty Cycle (D)	0.42
4.	Switching Frequency (F_s)	100KHz
5.	Leakage Inductance (L_1, L_2)	1.03 μ H, 1.18 μ H
6.	Clamping Capacitor (C_1)	4.7 μ F
7.	Load Resistance	100 Ω

V. SIMULATION RESULTS

The simulation was carried out in MATLAB/SIMULINK tool to verify theoretical. The switching frequency is set to 100 KHz. SIMULINK is a graphical extension to MATLAB for modeling and simulation of systems. The switching circuit of the conventional and proposed system are provided as follows.

CONVENTIONAL SYSTEM:

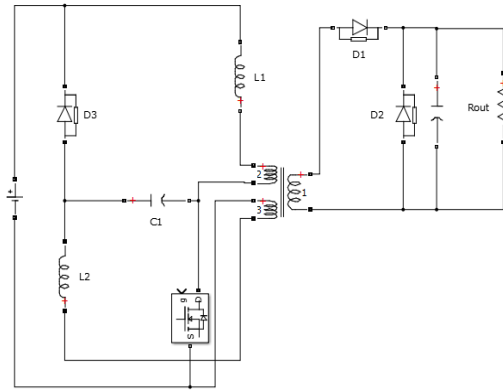


Fig 5.1 Equivalent Circuit of Conventional Converter

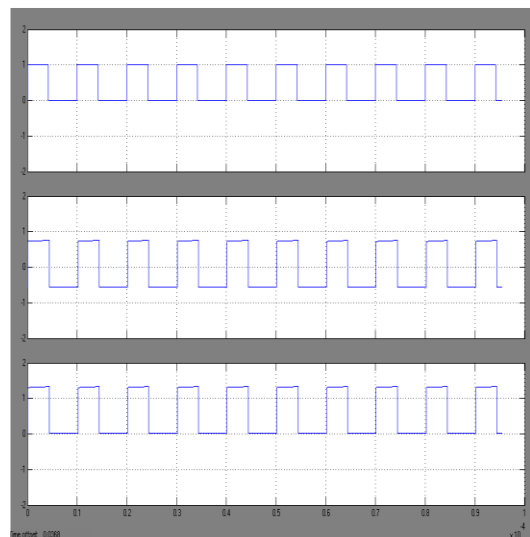


Fig 5.2 Input waveform gate trigger pulse

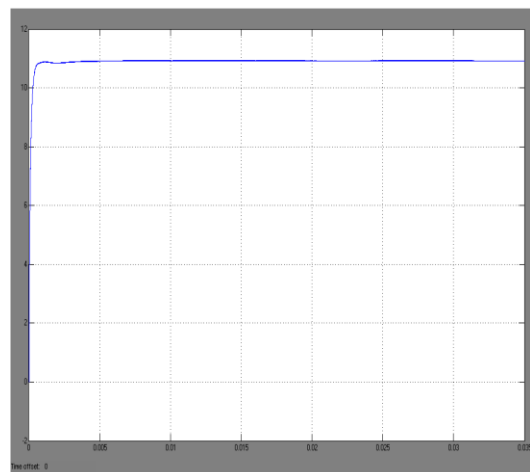


Fig 5.3 Output voltage waveform

DC-DC Converter with Input Current Ripple Reduction for Battery Charging Application

PROPOSED SYSTEM

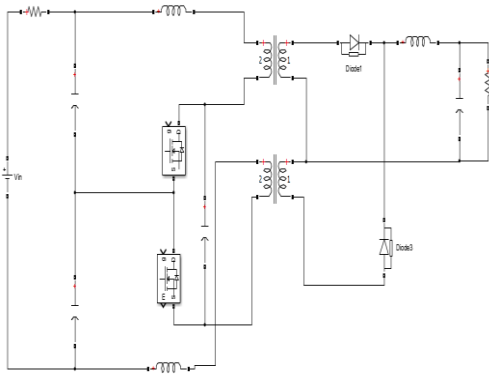


Fig 5.4 Equivalent Circuit of Proposed Converter

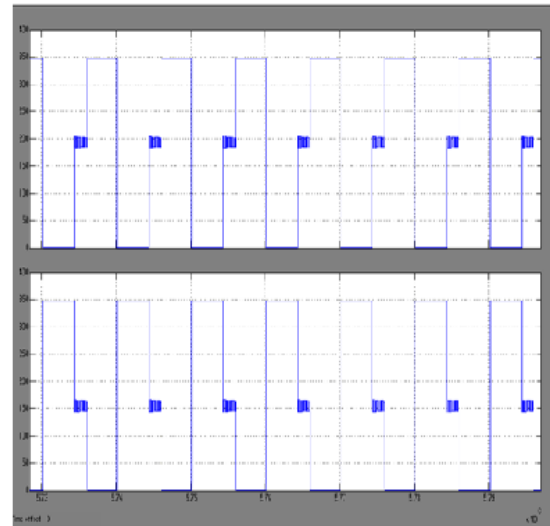


Fig 5.7 Drain Source waveform of switch S1,S2

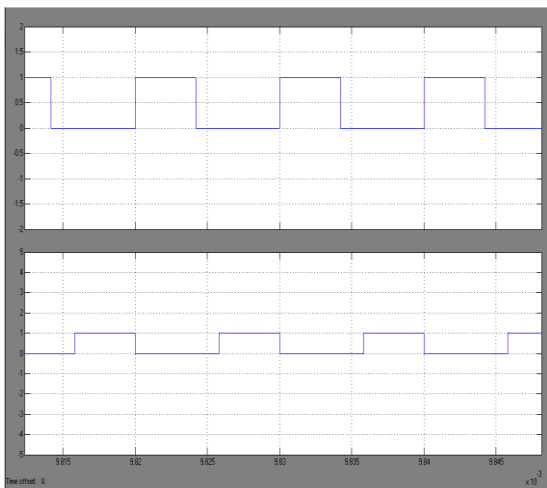


Fig 5.5 Gate triggering waveform of switch S1,S2

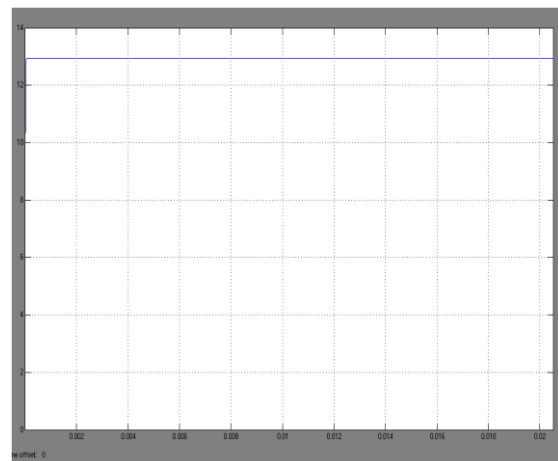


Fig 5.8 Output voltage waveform of proposed converter

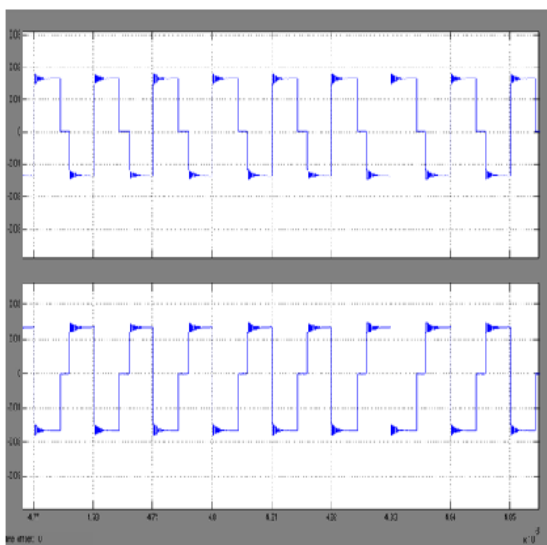


Fig 5.6 C2,C3 Capacitor waveform

VI. CONCLUSION

In this paper the input current ripple is reduced using Half Bridge Converter with LCL filter. The leakage inductance energy is absorbed resulting in eliminating voltage spikes. Voltage clamping functions and built in snubbing also performed. The voltage stress and switching losses are reduced. The ripple and undesired harmonics can be reduced without adding a large input filter. Because of these features the proposed converter is suitable for Dc-Dc converters, office applications, telecommunication devices and for battery charging applications.

REFERENCES

- [1] C. S. Leu, F. C. Lee, and J. H. Liang, "An Advanced Integrated Filter Converter (IFC) with two-switch forward configuration for off-line applications," in Proc. 29th Annu. Conf. IEEE Ind. Electron. Soc., Nov. 2–6, 2003, vol. 1, pp. 550–555.
- [2] A. K. Rathore and S. K. Mazumder, "Novel zero-current switching current-fed half-bridge isolated Dc/Dc converter for fuel cell based applications," in Proc. Energy Convers. Congr. Expo.,

DC-DC Converter with Input Current Ripple Reduction for Battery Charging Application

- Sep.2010,pp. 3523–3529.
- [3] J.-H. Jung, H.-S. Kim, J.-H. Kim, M.-H. Ryu, and J.-W. Baek, "High efficiency bidirectional LLC resonant converter for 380 V DC power distribution system using digital control scheme," in 27th Annu IEEE Appl. Power Electron. Conf. Exposition, Feb.,2012, pp. 532–538.
- [4] C. S. Leu, "A novel full-bridge configuration for high-power applications: built-in input filter full-bridge converter (BIFFBC)," in Proc. 28th Annu. IEEE Power Electron. Spec. Conf., Jun. 1997, vol.1, pp. 763–768.
- [5] N. M. L. Tan, T. Abe, and H. Akagi, "Design and performance of a bidirectional isolated dc-dc converter for a battery energy storage system," IEEE Trans. Power. Electron., vol. 27, no. 3, pp. 1237–1248, Mar. 2012.
- [6] Sheng-Yuan Ou, Ho-Pu Hsiao and Chen-Hung Tien, "Analysis and Design of a Prototype Single- Stage Half-Bridge Power Converter," 2010 5th IEEE Conference on Industrial Electronics and Applications, pp.1168-1173
- [7] T.-F. Wu, Y.-C. Chen, J.-G. Yang, and C.-L. Kuo, "Isolated bidirectional full-bridge dc-dc Converter with a flyback snubber," IEEE Trans. Power Electron., vol. 25, no. 7, pp. 1915–1922, Jul. 2010
- [8] X. Fang, H. Hu, Z. J. Shen, and I. Batarseh, "Operation mode analysis and peak gain approximation of the LLC resonant converter," IEEE Trans. Power Electron., vol. 27, no. 4, pp. 1985–1995, Apr. 2012..
- [9] P. Karlsson, "DC distributed power system analysis, design and control for a renewable energy system," Ph.D. dissertation, Dept. Ind. Elect. Eng Autom., Lund Univ., Lund, Sweden, 2002.
- [10] Sannino, G. Postiglione, and M. H. J. Bollen, "Feasibility of a DC network for commercial facilities," IEEE Trans. Ind. Appl., vol. 39, no. 5, pp. 1499–1507, Sep./Oct. 2003.
- [11] M. Borage, S. Tiwari, S. Bhardwaj, and S. Kotaiah, "A full bridge DC-DC converter with zero voltage switching over the entire conversion ranges," IEEE Trans. Power Electron., vol. 23, no. 4, pp. 1743–1750, Jul. 2008.
- [12] S.-Y. Chen, Z.R. Li, and C.-L. Chen, "Analysis and design of single-stage ac/dc LLC resonant converter," IEEE Trans. Ind. Electron., vol. 59, no. 3, Jun 2009.