

# Molecular analysis of Coagulase (*coa*) gene polymorphism in clinical isolates of *Staphylococcus aureus* by PCR-RFLP

N.G.Ramesh Babu<sup>1\*</sup>, GB.Bakhya Shree<sup>2</sup>, L.Rekha<sup>2</sup>, P.Karthiga<sup>3</sup>

Professor and Head of the Department, Department of Biotechnology, Adhiyamaan College of Engineering, Hosur<sup>1</sup>

Student, Final year B.Tech – Biotechnology, Adhiyamaan College of Engineering, Hosur<sup>2</sup>, Tamilnadu, India

Project Co-ordinator, Medox Biotech Academy, Chennai<sup>3</sup>, Tamilnadu, India

\*Corresponding author

**Abstract:** Coagulase enzyme is one of the virulence factors of *Staphylococcus aureus*. This study is based on the molecular analysis of the coagulase encoding gene. The polymorphism of the *coa* gene existing in different *Staphylococcus aureus* have been analyzed in this study. *Staphylococcus aureus* (14 isolates) were used for this study, among which 12 were isolated from clinical samples such as infected blood, urine, pus, wounds and 2 isolates were maintained as standards obtained from ATCC. The 12 isolates were identified as coagulase positive and 2 isolates were coagulase negative by various biochemical tests. For further confirmation, DNA from each sample was isolated and the *coa* gene was amplified with appropriate primers. The PCR results of 12 coagulase positive *S.aureus* gave two different sets of amplicons. The PCR products were subjected to restriction digestion using RFLP with *AluI*. Different restriction patterns (5) were obtained in RFLP. This variation in restriction patterns is because of the VNTRs present in each isolates. This study emphasizes the genotypic variation among different *S.aureus* isolates of samples, which may be considered as an important criterion while treating *Staphylococcal* infections.

**Keywords:** *coa* gene, PCR, RFLP, *AluI*, VNTRs.

## I INTRODUCTION

*Staphylococcus aureus* is a gram positive, non-motile, non-spore forming, facultative anaerobic bacterium. They are spherical in shape and form irregular grape like clusters and belong to the family *Micrococcaceae*. Members of *Staphylococcus* are catalase positive. *S.aureus* is usually found over human skin and in the nasal cavity, and it can also become a persistent organism in slaughterhouses<sup>[1-6]</sup>. The identification of *Staphylococcus aureus* is generally done by staining methods (simple and Gram's staining) and biochemical tests such as catalase test, coagulase test and mannitol fermentation test. It produces different types of virulence factors such as antigens such as capsules and adhesins; Enzymes such as coagulase, catalase, hyaluronidase and staphylokinase and toxins such as  $\alpha$ -Toxin,  $\beta$ -Toxin,  $\delta$ -Toxin, Panton-Valentine Leukocidin(PVL), Enterotoxin, Exfoliative Toxin, and Toxic Shock Syndrome Toxin(TSST) cause several diseases in human beings<sup>[7-14]</sup>.

Coagulase is an enzyme secreted by *Staphylococcus aureus* which causes the clotting of plasma in the host. Based on the ability of clotting the blood plasma, species are classified into two types: coagulase positive *Staphylococcus aureus* and coagulase negative *Staphylococcus aureus*<sup>[15-19]</sup>. The organism secretes two forms of coagulase enzyme, free coagulase and bound coagulase. Free coagulase is secreted extracellularly whereas the bound coagulase is associated

# International Journal of Innovative Research in Science, Engineering and Technology

(An ISO 3297: 2007 Certified Organization)

Vol. 3, Issue 1, January 2014

with the cell wall. The free coagulase binds with the coagulase reacting factor (CRF) in the plasma of the host and forms a complex, thrombin. The bound coagulase is also known as the clumping factor, which binds with the alpha and beta chains of the fibrinogen in the plasma and converts it into fibrin to form a clot<sup>[5,20,21]</sup>.

Major infections caused by *Staphylococcus aureus* include, nosocomial infections such as infective endocarditis, bacteremia, pneumonia and cardiovascular infections.<sup>[2, 22]</sup> It also causes several infections such as bacteremia, endocarditis, toxic shock syndrome (TSS) and skin and soft tissue infections. Toxic shock syndrome is caused by toxins.<sup>[6, 23, 24]</sup> The detection of coagulase enzyme in Staphylococcal infections is important because it is one of the major virulent factors. Laboratory diagnosis of Staphylococcal infections can be done by many methods such as slide coagulase test, tube coagulase test and latex agglutination tests. Molecular diagnosis of coagulase encoding gene of *Staphylococcus aureus* can be studied by using various molecular techniques such as PCR, RFLP etc. Coagulase production is considered as an important criterion for the identification of *Staphylococcus* infection. There are different allelic forms of this enzyme. The *coa* gene, encoding for the production of coagulase enzyme is used for DNA based diagnosis of *S.aureus*. This gene is highly polymorphic because of the variable sequences at its 3' end. The analysis of coagulase encoding gene in a variety of Staphylococcal species have revealed variations in the amino acid sequences and number of tandem repeats at the 3' end. There is heterogeneity in this region, containing the 81 bp tandem repeats encoding repeated 27-amino-acid sequences in the C-terminal region.<sup>[25, 26]</sup> PCR amplification of this gene from different species may yield different amplicons.

## II MATERIALS AND METHODS

### A. Bacterial isolates

Different samples (20) were collected from patients suspected for Staphylococcal infections. The samples were collected in transport medium from pus, wounds, blood and urine. In addition, two strains of *Staphylococcus aureus* collected from ATCC were maintained as positive control for identification of *coa* gene polymorphism. The collected samples were streaked on blood agar medium and incubated for about 24 hrs.

### B. Identification of *S.aureus*

Several tests were carried out for the identification of *S.aureus*. Initially Gram's staining was performed to identify the morphology of the organism, and various biochemical tests such as catalase test, Mannitol salt agar test, slide coagulase and tube coagulase test were carried out.

### C. DNA extraction

Genomic DNA from the bacteria was isolated from the samples. Initially 1.5ml of 24hours bacterial culture was taken and subjected to centrifugation. The resulting pellet was treated with 500µl of lysis buffer and 25µl of lysozyme and it was incubated for 20 minutes at 37°C. The mixture was then treated with 50 µl of SDS and incubated for 15 minutes at 55°C. 250µl of 5 M NaCl was added and centrifuged. The supernatant was collected and treated with 10 µl of RNase and incubated at 37°C for 30 mins. Later 600 µl of isopropanol was added and centrifuged. The pellet was washed with 70% ethanol and dried. Finally, the DNA pellet was stored in Tris EDTA (TE) buffer. Then the DNA fragments were resolved in 2% agarose gel.

### D. Amplification of *coa* gene by PCR

The *coa* gene was amplified by using two sequence of the primers as described by Isaya Janwithayanuchit *et al.*,<sup>[27-29]</sup> by using Forward primer: 5' ATA GAG ATG CTG GTA CAG G 3' and reverse primer: 5' GCT TCC GAT TGT TCG ATG C 3'. The initial denaturation was at 94°C for 3 minutes. Denaturation of 94°C for 1 minute, annealing at 55°C for 1 minute and elongation temperature of 72°C for 1 minute was maintained for 30 cycles. The final elongation was at 72°C for 5 minutes and the reaction was held at 4°C. The amplified products were subjected to 2% agarose gel electrophoresis.

### E. PCR- RFLP of *coa* gene

The RFLP of *coa* gene was carried out by using *Alu I*. 10µl of *coa* gene PCR products were digested with 10U of 1 µl *Alu I* restriction enzyme and incubated at 37°C for 1 hour. The resulting restricted fragments were separated in 1.5% agarose gel.

# International Journal of Innovative Research in Science, Engineering and Technology

(An ISO 3297: 2007 Certified Organization)

Vol. 3, Issue 1, January 2014

### III RESULTS

**A. Isolation and identification of *S.aureus***

Twenty different samples were collected from persons. Among these samples, 12 samples resulted in individual spherical colonies of greyish white colour, 5 samples resulted in trivial white colonies and 3 samples showed circular pinheaded white colonies. The isolates with individual spherical, greyish white colonies were again subcultured in a new blood agar medium and were incubated for 24 hours.

**B. Biochemical tests**

Initially, Gram staining was performed, dark purple colour grape like clusters were observed which indicated the presence of Gram positive cocci species. Hemolysis test was performed to identify the bacteria’s ability to degrade red blood cells with the help of hemolysin protein. The 12 samples with two standards were subjected to hemolysis test. All the samples of *Staphylococcus spp* are catalase positive and shown  $\beta$  hemolysis over blood agar. Finally MSA tests were performed to confirm *Staphylococcus aureus* from other *Staphylococcus spp*.

**C. Coagulase test**

Slide and tube coagulase test were performed to identify the coagulase positive *S.aureus*. Agglutination was observed over the slide when the bacterial culture was mixed with a few drops of citrated plasma. The samples which gave negative results in slide coagulase test were subjected to tube coagulase test and the following results were obtained (Table 1).

**D. DNA extraction**

The DNA was extracted from all the 14 samples and the results were observed under 1% agarose gel electrophoresis. The DNA samples were loaded in the wells with a marker. 14 different bands were obtained. The DNA was obtained as a pure product without any undesired products. (Fig. 1) (Fig. 2)

**E. Amplification of *coa* gene by PCR**

After extracting the DNA the coagulase encoding gene in each sample was amplified using PCR. The results were observed under 2% agarose gel electrophoresis with 100-1500bp DNA marker. The following results were obtained (Fig. 3) (Fig. 4)

Table 1. Slide Coagulase test and tube Coagulase test.

SAMPLES														
TESTS	S1	S2	1	2	3	4	5	6	7	8	9	10	11	12
a)Slide coagulase	+	+	+	-	+	+	+	+	+	-	-	+	+	-
b)Tube coagulase	+	+	+	-	+	+	+	+	+	+	+	+	+	-

**International Journal of Innovative Research in Science,  
Engineering and Technology**

(An ISO 3297: 2007 Certified Organization)

**Vol. 3, Issue 1, January 2014**

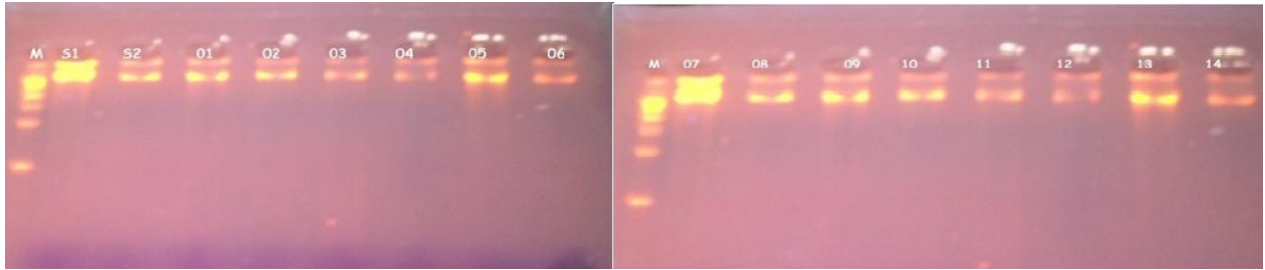


Fig.1 DNA extraction

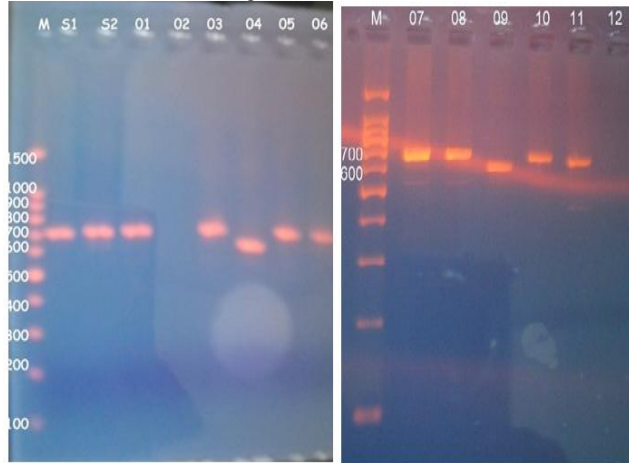


Fig.3 PCR amplicons

Fig.4 PCR amplicons

**F. PCR- RFLP**

The PCR amplicons were digested with *Alu* I enzyme and five different restriction patterns were obtained (Table 2) (Fig.5) (Fig.6) (Fig.7). This difference in restriction pattern may be due to the polymorphism existing in the *coa* gene of different *S.aureus* isolates.



Fig.5 Patterns of restriction for Standards

Fig.6 Patterns of restriction for samples

Fig.7 Patterns of restriction for samples

## International Journal of Innovative Research in Science, Engineering and Technology

(An ISO 3297: 2007 Certified Organization)

**Vol. 3, Issue 1, January 2014**

Table 2 Patterns of restriction

Patterns of restriction	I	II	III	IV	V
Sample number	S1,S2,5, 7, 8,10	4	9	3	1,11
PCR amplicons in bp(approx)	700	600	600	700	700
Restriction fragments in bp (approx)	290,210, 300	200,400	300,200, 110	150,300, 280	250,270, 290

### IV. DISCUSSION

Twelve *Staphylococcus spp* were isolated and were confirmed as *S.aureus* by using MSA test. All the 12 isolates were identified as coagulase positive *S.aureus* by performing biochemical tests such as catalase test, tube coagulase test and slide coagulase test. It was further confirmed by amplifying the *coa* gene using PCR. Among the 14, isolates 12 isolates gave amplicons of about  $700 \pm 20$  base pairs and remaining 2 isolates gave amplicons of about  $600 \pm 20$  bps. The PCR amplicons were further digested by using the *AluI*. The resulted restricted fragments were electrophoresed and five different restriction patterns were observed. The samples S1, S2, 5, 7, 8 & 10 gave similar restriction patterns of 290, 210, 300bps. These were named as restriction pattern I. The sample 4 gave different restriction pattern of about 400, 200 bps. Thus sample 4 was named as restriction pattern II. The sample 9 gave a restriction pattern of about 300, 200,110 bps. Sample 9 was named as restriction pattern III was named as restriction pattern III. The sample 03 gave a different restriction pattern of about 150,300,280 bps. Sample 03 was named as restriction pattern IV. The samples 01 and 11 gave a separate restriction pattern of 250, 270 & 290 bps. Thus samples 1 and 11 were named as restriction pattern V. These variations in the restriction pattern of *coa* gene in same type of Staphylococcal species is due to the polymorphism of the *coa* gene. The polymorphism exists because of the presence of VNTRs and thus each isolates are different in their genotypes with minimum similarities among them.

### V CONCLUSION

*Staphylococcus aureus* is one of the major pathogens which cause different diseases in human beings. The analysis of various virulence factors responsible for the pathogenicity of *S.aureus* is very important. This study emphasizes the importance of molecular diagnosis of coagulase positive *Staphylococcus aureus*. The amplification of coagulase encoding gene using PCR plays an important role in the diagnosis of coagulase positive *S.aureus*. In this study, the polymorphism existing in *coa* gene of various *Staphylococcus aureus* isolates have also been studied. The restriction digestion of the amplicons of *coa* gene using *AluI* enzyme gave different restriction patterns. This difference in the restriction patterns are attributed to the presence of VNTRs in the *coa* gene. This study also emphasizes that, the different coagulase positive *Staphylococcus aureus* isolates vary in their genotypes and, the analysis of polymorphism in *coa* gene will be helpful in treating different infections caused by *S.aureus* based upon their genotypes.



# International Journal of Innovative Research in Science, Engineering and Technology

(An ISO 3297: 2007 Certified Organization)

Vol. 3, Issue 1, January 2014

## REFERENCES

- [1] W.E. Kloos and T.L. Bannerman, "Update on clinical significance of coagulase-negative *Staphylococci*," *Journal of Clinical Microbiology*, vol. 7, pp. 117-140, 1994.
- [2] J.A. Shulman, A.J. Nahmias, "Staphylococcal infections: clinical aspects," *Wiley*, pp.457-482, 1972.
- [3] D.J. Stickler, R.J.C. McLean, "Biomaterials associated infections: the scale of the problem," *Journal of Cells Mater*, vol. 5, pp.167-182, 1995.
- [4] W.E. Kloos and M.S. Musselwhite, "Distribution and persistence of *Staphylococcus* and *Micrococcus* species and other aerobic bacteria on human skin," *Journal of Applied Microbiology*, vol. 30, pp. 381-385, 1975.
- [5] F.D. Lowy, "*Staphylococcus aureus* an intracellular pathogen," *Journal of Trends in Microbiology*, vol. 8, pp. 341-344, 1998.
- [6] S. Elek, "Experimental staphylococcal infections in the skin of man," *Ann Newyork Academy of Sciences*, vol.65, pp. 85-90, 1956.
- [7] L.G Harris, S.J Foster and R.G. Richards, "An Introduction to *Staphylococcus aureus*, and techniques for identifying and quantifying *S. aureus* adhesins in relation to adhesion to biomaterials," *European cells and materials*, vol.4, pp.39-60, 2002.
- [8] T. J. Foster and M. Höök, "Surface protein adhesins of *Staphylococcus aureus*," *Trends in Microbiology*, vol. 6, pp. 484-488, 1998.
- [9] P. Speziale, G. Pietrocchia and S. Rindi, "Structural and functional role of *Staphylococcus aureus* surface components recognizing adhesive matrix molecules of the host," *Journal of Future Microbiology*, vol. 4, pp. 1337-1352, 2009.
- [10] A. W. Maresso and O. Schneewind, "Sortase as a target of anti-infective therapy," *Pharmacological Reviews*, vol.60, pp. 128-141, 2008.
- [11] F. D. Lowy, "*Staphylococcus aureus* infections," *The New England Journal of Medicine*, vol. 339, pp. 520-532, 1998.
- [12] J. Kaneko and Y. Kamio, "Bacterial two-component and hetero-heptameric pore-forming cytolytic toxins: structures pore-forming mechanism organization of the genes," *Journal of Bioscience, Biotechnology, and Biochemistry*, vol. 68, pp. 981-1003, 2004.
- [13] C. J. C. De Haas, K. E. Veldkamp and A. Peschel, "Chemotaxis inhibitory protein of *Staphylococcus aureus*, a bacterial antiinflammatory agent," *Journal of Experimental Medicine*, vol. 199, pp. 687-695, 2004.
- [14] T. Chavakis, M. Hussain and S. M. Kanse, "*Staphylococcus aureus* extracellular adherence protein serves as anti-inflammatory factor by inhibiting the recruitment of host leukocytes," *Nature Medicine*, vol. 8, pp. 687-693, 2002.
- [15] Justyna Bien, Olga Sokolova, and Przemyslaw Bozko, "Characterization of Virulence Factors of *Staphylococcus aureus*: Novel Function of known Virulence factors that are implicated in activation of airway Epithelial Proinflammatory Response," *Journal of Pathogens*, 2011.
- [16] N. Balaban and A. Rasooly, "*Staphylococcal* enterotoxins," *International Journal of Food Microbiology*, vol.61, pp. 1-10, 2000.
- [17] W. E. Kloos and T. L. Bannerman, "Update on clinical significance of coagulase-negative *Staphylococci*," *Journal of Clinical Microbiology*, vol. 7, pp. 117-140, 1994.
- [18] S.I.Salasia, Z. Khusnan, C.Lammler and M.Zschock, "Comparative studies on pheno- and genotypic properties of *Staphylococcus aureus* isolated from bovine subclinical mastitis in central Java in Indonesia and Hess in Germany," *Journal of Veterinary Science*, vol.5, pp. 103-109, 2004.
- [19] A.Schröder, B.Schröder, B.Roppenser, S. Linder, B.Sinha, R.Fässler and M.Aepfelbacher, "*Staphylococcus aureus* fibronectin binding protein-A induces motile attachment sites and complex actin remodeling in living endothelial cells," *Journal of Molecular Biology of the cell*, vol. 17, pp. 5198-5210, 2006.
- [20] G. Normanno, G.L. Salandra, A. Dambrosio, N.C. Quaglia, M. Corrente, A. Parisi, G. Santagada, A. Firinu, E. Crisetti and G.V. Celano, "Occurrence, characterization and antimicrobial resistance of enterotoxigenic *Staphylococcus aureus* isolated from meat and dairy products," *International Journal of Food Microbiology*, vol. 115, pp. 290-296, 2007.
- [21] D. Osmonov, K. S. Ozcan, I.Erdinler, S. Altay, E. Yildirim, C. Turkkan, A. Ekmekci, B. Gungor and K. Gurkan, "Cardiac Device-related endocarditis," *Journal of Cardiology*, vol. 5087, pp. 241-249, 2012.
- [22] Eili Klein, L. David Smith, and Ramanan Laxminarayan, "Hospitalizations and deaths caused by Methicillin-Resistant *Staphylococcus aureus*," *Journal of Emerging Infectious Diseases*, vol.13, pp.1840-1846, 2005.
- [23] S. Shi and X. Zhang, "Interaction of *Staphylococcus aureus* with osteoblasts (Review)," *Exp Ther Med Journal*, vol. 3, pp. 367-370, 2012.
- [24] R. A. De Oliveira-Calsolari, V. C. Pereira, J. P. Araújo-Júnior and M. de L. de Souza-da Cunha, "Determination of toxigenic capacity by reverse transcription polymerase chain reaction in coagulase-negative staphylococci and *Staphylococcus aureus* isolated from newborns in Brazil," *Journal of Microbiology and Immunology*, vol. 55, pp. 394-407, 2011.
- [25] S.H. Goh, S.K. Byrne, J.L. Zhang and A.W. Chow, "Molecular Typing of *Staphylococcus aureus* on the basis of coagulase gene polymorphisms," *Journal of Clinical Microbiology*, vol.30, pp.1642-1645, 1992.
- [26] Reza Talebi-Satlou, Malahat Ahmadi and Habib Dastmalchi Saei, "Restriction Fragment Length Polymorphism Genotyping of Human *Staphylococcus aureus* isolates from two hospitals in Urmia region of Iran using the *coa* Gene," *Journal of Microbiology*, vol.5, pp.416-420, 2012.
- [27] Isaya Janwithayanuchit, Somying Ngam-Ululert, Porntip Paungmoung and Watcharin Rangsanuratt, (2006) "Epidemiologic Study of Methicillin-Resistant *Staphylococcus aureus* by coagulase gene polymorphism," *Journal of Infectious Diseases*, vol. 32, pp.127-132.
- [28] J. Hookey, J.F. Richardson and B.D. Cookson, "Molecular typing of *Staphylococcus aureus* based on PCR-restriction fragment polymorphism and DNA sequence analysis of the coagulase gene," *Journal of Clinical Microbiology*, vol. 36, pp. 1083-1089, 1998.
- [29] J. Hookey, V. Edwards, B.D. Cookson and J. Richardson, "PCR-RFLP analysis of the coagulase gene of *Staphylococcus aureus*: application to the differentiation of epidemic and sporadic methicillin-resistant strains," *Journal of Hospital Infection* vol. 42, pp. 205-12. 1999.