

# Research & Reviews: Journal of Medical and Health Sciences

## Cardiac Progenitor Cells: Hope for the Future

Bharthi R<sup>1\*</sup>, Dhilleswara Rao V<sup>2</sup>

<sup>1</sup>Osmania University, Hyderabad, India

<sup>2</sup>Center for Excellence in Genomics, Madurai Kamaraj University, Tamil Nadu, India

### Perspective Article

Received date: 18/07/2016  
Accepted date: 18/07/2016  
Published date: 25/07/2016

#### \*For Correspondence

Bharthi R, Master's in Pharmacy, Osmania University, Hyderabad, India.

**E-mail:** bartirudroju@gmail.com

**Keywords:** Cardiovascular diseases, Embryonic cell, Myocytes, Cardiomyopathy, Cardiac progenitor cells, Cardio spheres.

#### ABSTRACT

The discovery of embryonic and adult stem cells is one of the ground breaking findings, which offer new treatment options for various cardiovascular diseases. Embryonic stem cells can differentiated into multiple cell lineages in vitro such as cardiac myocytes when transplanted into the heart. Few recent studies showed that the infusion of bone marrow-determined cells has remarkable clinical significance and useful advantage. The phase I/II clinical studies have proved that the bone marrow derived mononuclear cells offer variety options; however, their clinical are limited. This review summarizes the role of CPCs in treatment of cardiovascular diseases, clinical opportunities, challenges in usage of CPCs in human models and the future prospective.

## INTRODUCTION

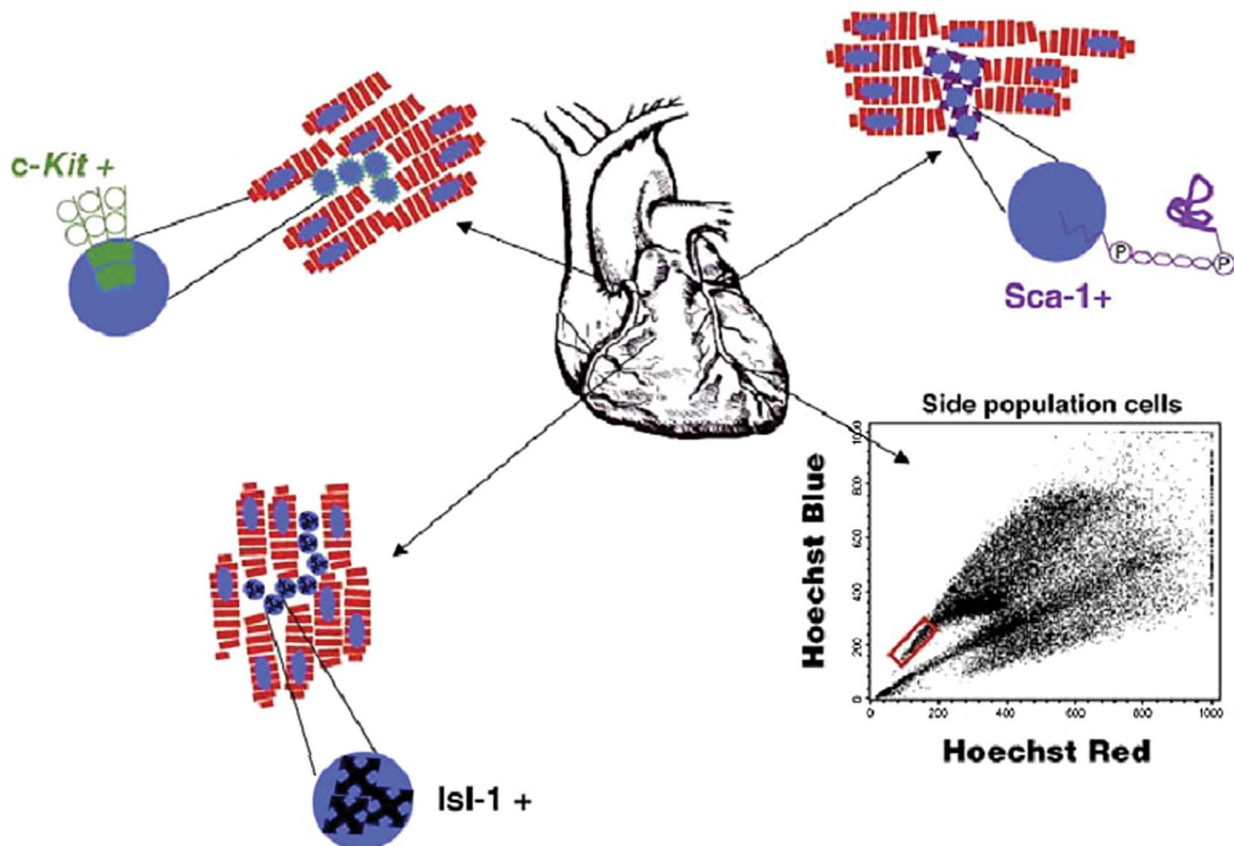
In recent past, translational approach in clinical medicine led to elucidation of the causes and pathophysiological episodes of heart diseases. The integration of basic knowledge and advanced medical technologies improved the understanding of the causative agents, diagnosis and treatments. Though, significant developments witnessed, cardiovascular diseases are leading cause of mortality. After the introduction of stem cell biology and regenerative medicine, there is an increased interest in Cardiac progenitor cells <sup>[1]</sup>. Cardiac progenitor cells are endogenous cardiac stem cells (eCSCs) are tissue-specific stem progenitor cells harbored within the adult mammalian heart. A population of inhabitant cardiovascular immature microorganisms, known as cardiogenic forebear cells (CPCs), has been distinguished in the heart. At the present time, it is not known whether the CPCs really home from bone marrow to the heart, or are leftovers of embryonic cell populations that reside in corners in the right chamber and right ventricle. These CPCs are thought to represent the physiological turnover of cardiovascular myocytes and vascular endothelial cells, which happens in the heart without damage <sup>[2-10]</sup>.

#### Stem cell biology

Cardiogenic progenitor cells contain less than 1% of the cells in the heart, and have been sub classified into c-kit, Scal-1 and Isl-1 cells, as indicated by their look of surface marker translation variables. In any case, none of these surface markers are profoundly particular for heart progenitor cells, since they are additionally found in hematopoietic foundational microorganisms <sup>[11]</sup>. Also, a blended populace of CPCs, termed cardio spheres, has been recognized from heart biopsies. The presence of each of these cell populaces opens up extra open doors for cardiovascular repair, particularly in patients with ischemic cardiomyopathies.

C-kit cardiogenic stem cells have the limit for self-recharging, clonogenicity and pluripotency and can separate into myogenic, vascular endothelial and smooth muscle ancestries in vitro and may recover ischemic/infracted myocardium in exploration animals. These cells can express the heart translation variables GATA-4, Nkx2.5 and MEF2, which are essential in the improvement of precardiac cells. C-kit is a receptor for foundational microorganism element, which is discharged from ischemic/infracted myocardium and is critical in the chemo attraction of stem cells to the myocardium. Autologous c-kit cells from the privilege atrial member are right now being examined for the treatment of patients with cardiomyopathy in the Cardiac Stem Cell Infusion in Patients with Ischemic Cardiomyopathy (SCIPIO) study <sup>[12-20]</sup>.

A second potential populace of CPCs communicates undeveloped cell antigen-1 (Sca-1); however don't express c-kit. Sca-1 cells have been related to the utilization of mouse Sca-1 immune response, which ties to a homogenous populace of cells in fetal and grown-up human hearts. Sca-1 cells are fit for self-recharging, and are included in cell flagging and cell adhesion. Upon incitement with 5-azacytidine in society, Sca-1 cells express cardiovascular qualities and basic proteins and can separated into cardio myocytes. At the point when directed intravenously, murine Sca-1 cells can home to infarcted myocardium in examination animals (**Figure 1**)<sup>[21]</sup>.



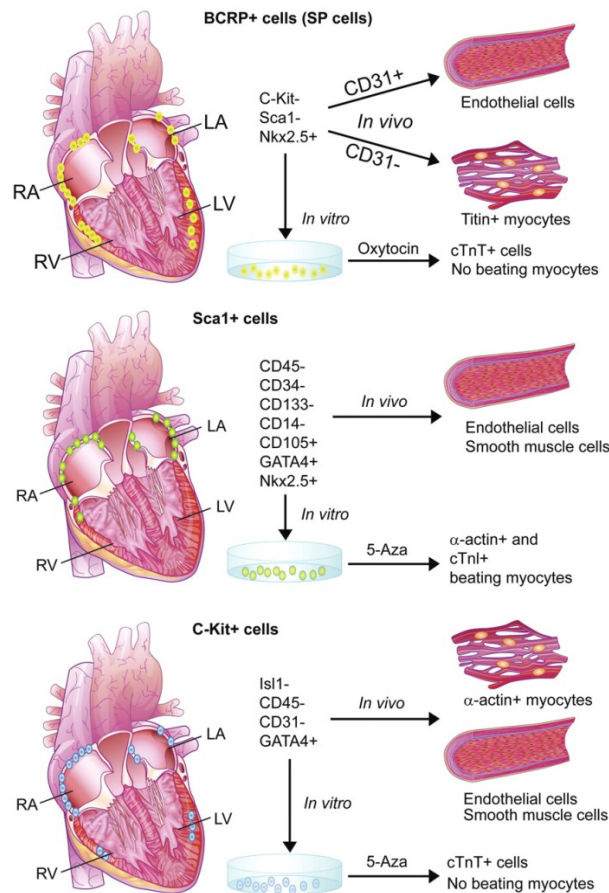
**Figure 1.** Cardiac stem cells: A promising treatment option<sup>[22]</sup>.

A third population of human stem cells are found in the hearts of infants, and express the translation element Isl-1, and additionally Nkx2.5 and GATA4, which are vital interpretation variables required in the early phases of cardio genesis. Isl-1 cells don't express c-Kit or Sca-1<sup>[23-40]</sup>. These cells can receive a cardio myocyte phenotype with in place calcium cycling and can create activity possibilities when cocultured with neonatal myocytes. The Isl-1 progenitor cells have been disconnected in the atrial divider, conus muscle and right ventricle, and have been involved in the improvement of the right ventricle and the inflow and surge tracts of the heart.

A few laboratories have demonstrated that cardiovascular stem cells can be grown directly from biopsies of atrial and ventricular human tissues, and tissues from examination animals. These foundational microorganisms acquired from heart biopsies are termed cardio spheres. Cardio spheres are a blended populace of heart undifferentiated organisms that are multipotent and clonogenic, and express stem and endothelial begetter cell antigens. These cells can separate into cardio myocytes and vascular cells. Human cardio spheres have been infused into the outskirts zone of myocardial infarcts, and have engrafted and expanded suitable myocardium in exploration animals. Autologous cardio spheres are being researched in the treatment of patients with ischemic cardiomyopathies in the Cardio sphere-Derived Autologous Stem Cells to Reverse Ventricular Dysfunction (CADUCEUS) study<sup>[41]</sup>.

The presence and accessibility of each of these autologous cardiovascular undeveloped cell populaces, particularly cardio spheres, gives critical new treatment chances to heart repair and constraint of ventricular rebuilding in patients with myocardial areas of dead tissue and ischemic cardiomyopathies. A noteworthy current test is acquiring these cells from heart biopsies without delivering understanding morbidity or mortality (**Figure 2**).

In any case, accessibility of cardiac progenitors represents a significant advantage over differentiated cells or undifferentiated pluripotent stem cells to achieve large-scale production of tumor-free cardiac cells for clinical and translational applications<sup>[42-63]</sup>.



**Figure 2.** Schematic illustration of different cardiac resident progenitor cells <sup>[64]</sup>.

### MicroRNA and CPCs

As it known that heart has limited regeneration capacity, has become the challenge for the researchers in cell therapy, though CPCs are multipotent myocardium. It has been reported that dysregulation of mir-669 could aberrant the diffraction of CPCc in vitro and in vivo. Further studies proved that in the presence of miRNAs the reprogramming of CSCs were obtained the 3D structures of cardiac muscle in a correct orientation <sup>[7,65-69]</sup>. Moreover the recent studies showed that the 20 miRNA signatures are useful in predict the myocardial infraction with increased sensitivity, accuracy and specificity. MiRNAs act as an intracellular and intercellular mediator and biomarker in cardiac diseases, which opened the new opportunities in development of new therapeutic strategies. Further clinical studies that could explore the applications and association between CPCs and miRNAs may raise the future hope <sup>[16,70]</sup>.

## CONCLUSION AND FUTURE PROSPECTIVE

Late advances in our comprehension of formative and immature microorganism science of the cardiovascular framework are conveying us nearer to making mammalian heart recovery a clinical reality. This requires well designed clinical tests and validation and must be tested effectively in the model organisms and then in human models. This methodology might be material to various infections for which there are couple of substantial creature model frameworks, for example, complex chromosomal issue, polygenic disarranges where regular hereditary variations present vulnerability or imperviousness to illness, and all around portrayed hereditary issue that are not enough restated in animal models. What's more, medication disclosure, cardio toxicity screening of new medications, and distinguishing proof and approval of helpful targets ought to soon be led straightforwardly on human cardiovascular cells got specifically from patients. Cardiovascular immature microorganism science may well messenger another period of converse translational medication <sup>[71-94]</sup>.

## REFERENCES

1. Rutering J, et al. Improved method for isolation of neonatal rat cardiomyocytes with increased yield of C-Kit+ cardiac progenitor cells. *J Stem Cell Res Ther.* 2015;5:305.
2. Human embryonic non-haematopoietic SSEA-1+ cells are cardiac progenitors expressing markers of both the first and second heart field. *J Cytol Histol.* 2013;4:192.
3. Sassoli C, et al. Cardiac progenitor cells as target of cell and growth factor-based therapies for myocardial regeneration. *J Stem Cell Res Ther.* 2013;S9:004.

4. Cyganek L, et al. Cardiac progenitor cells and their therapeutic application for cardiac repair. *J Clin Exp Cardiol.* 2013;S11-008.
5. Hou X, et al. Isolation, characterization and spatial distribution of cardiac progenitor cells in the sheep heart. *J Clin Exp Cardiol.* 2012;S6-004.
6. Ann N, et al. Nkx2-5 regulates TdGF1 (Cripto) early during cardiac development. *J Clin Exp Cardiol.* 2012;S11-003.
7. Serradifalco C, et al. MicroRNA and cardiac stem cell therapy. *J Clin Exp Cardiol.* 2012;S11-001.
8. Roehrich ME, et al. Characterization of cardiac-derived myelo-monocytoid progenitor cells. *J Stem Cell Res Ther.* 2012;S9-002.
9. James F, et al. Defining conditions for sustaining epiblast pluripotency enables direct induction of clinically-suitable human myocardial grafts from biologics-free human embryonic stem cells. *J Clin Exp Cardiol.* 2012;S9-001.
10. Reesukumal K, et al. Purification, expansion and characterization of putative murine cardiac progenitor cells. *J Stem Cell Res Ther.* 2011;S1-002.
11. Alam MA, et al. Is cardiac stem cell therapy a new horizon of heart regeneration: Literature review. *Mol Biol.* 2016;159.
12. Bin L, et al. Cardiac stem cells and their regenerative role on myocardial infarction. *J Mol Genet Med.* 2014;8:139.
13. Xuejun H. Cellular medicine for the heart-the pharmacologic utility and capacity of human cardiac stem cells. *J Clin Exp Cardiol.* 2013;S11-e001.
14. Hsiao LC and Carr C (2013) Endogenous cardiac stem cell therapy for ischemic heart failure. *J Clin Exp Cardiol.* 2013;S11-007.
15. Beltrami AP, et al. Cardiac resident stem cells: Work (Still) in progress. *J Stem Cell Res Ther.* 2012;S9-001.
16. Sharma UC, et al. Overexpression of C-terminal domain of talin-1 enhances survival, migration and differentiation of human cardiac stem cells. *J Stem Cell Res Ther.* 2012; 2:123.
17. Gu Y, et al. Early subclinical biomarkers in onco-cardiology to prevent cardiac death. *Cardiovasc Pharm Open Access.* 2016;5:3.
18. Noronha MA, et al. Developments in cardiovascular proteomics. *J Proteomics Bioinform.* 2016;9:144-150.
19. Croteau E, et al. Cardiac metabolism imaging and chemotherapy cardiotoxicity. *J Clin Toxicol.* 2014;4:213.
20. Dias C, et al. Cardiac analysis of autologous transplantation of co-cultured skeletal myoblasts and mesenchymal cells in a rat model doxorubicin-induced cardiotoxicity: Histopathological and functional studies. *J Clin Exp Cardiol.* 2015;6:407.
21. Shabana S, et al. The efficacy of etoposide on H9c2 cardiomyoblasts against doxorubicin induced cardiotoxicity. *Anat Physiol.* 2015;5:186.
22. Daily NJ, et al. Improving cardiac action potential measurements: 2D and 3D cell culture. *J Bioengineer & Biomedical Sci.* 2015;5:168.
23. Nardo PD, et al. Real benefit of anthracycline-based chemotherapy in elderly and impaired patients: A retrospective analysis. *J Integr Oncol.* 2015;4:143.
24. Jagetia GC and Venkatesh P. An indigenous plant bael (*Aegle marmelos* (L.) Correa) extract protects against the doxorubicin-induced cardiotoxicity in mice. *Biochem Physiol.* 2015;4:163.
25. Corsetti G, et al. Protect and counter-attack: Nutritional supplementation with essential amino acid ratios reduces doxorubicin "induced cardiotoxicity *in vivo* and promote cancer cell death *in vitro*. *J Cytol Histol.* 2015;6:354.
26. Hussein MA. Cardioprotective effects of astaxanthin against isoproterenol-induced cardiotoxicity in rats. *J Nutr Food Sci.* 2014;5:335.
27. Barakat K. Modelling off-target interactions (I): Cardiotoxicity. *J Phylogenetics Evol Biol.* 2015;2:e131.
28. Nielsen K, et al. Cardiotoxicity in asymptomatic patients receiving adjuvant 5-fluorouracil. *J Clin Toxicol.* 2014;4: 211.
29. Boekhout AH, et al. Factors affecting long-term safety of trastuzumab in patients with early HER2-positive breast cancer. *Adv Pharmacoepidemiol Drug Saf.* 2014;3:160.
30. Katamura M, et al. Curcumin attenuates doxorubicin-induced cardiotoxicity by inducing autophagy via the regulation of JNK phosphorylation. *J Clin Exp Cardiol.* 2014;5:337.
31. Gouri A, et al. Hematologic malignancies therapy and cardiotoxicity: New biomarkers. *J Hematol Thrombo Dis.* 2014;2:e110.
32. Gasanov SE, et al. Snake venom cytotoxins, phospholipase A<sub>2</sub>s, and Zn<sup>2+</sup> dependent Metalloproteinases: Mechanisms of Action and Pharmacological Relevance. *J Clin Toxicol.*
33. Natriuretic peptides and troponin I do not predict chemotherapy-induced cardiac toxicity. *J Cardiovasc Dis Diagn.* 2014;2:140.
34. Manal M, et al. Some biomarkers in carbon monoxide-induced cardiotoxicity. *J Environ Anal Toxicol.* 2013;3:176.

35. Oliveira MS, et al. Doxorubicin cardiotoxicity and cardiac function improvement after stem cell therapy diagnosed by strain echocardiography. *J Cancer Sci Ther.* 2013;5:052-057.
36. Dehpour AR. Pretreatment of CAV combination chemotherapy with tropisetron shows less cardio and neurotoxicity side effects in rats. *J Clin Toxicol.* 2012;S6-001.
37. Amani N, et al. Animal study of anthracycline-induced cardiotoxicity and nephrotoxicity and evaluation of protective agents. *JCST.* 2011;3:096-103.
38. Khandave SS, et al. Evaluation of bioequivalence and cardio-hepatic safety of a single dose of fixed dose combination of artemether and lumefantrine. *JBB.* 2010;2:081-085.
39. Hsiao LC and Carr C. Endogenous cardiac stem cell therapy for ischemic heart failure. *J Clin Exp Cardiol.* 2013;S11-007.
40. Roehrich ME, et al. Characterization of cardiac-derived myelo-monocytoid progenitor cells. *J Stem Cell Res Ther.* 2012;S9-002.
41. Okura H, et al. Spermine treated-adipose tissue-derived multi-lineage progenitor cells improve left ventricular dysfunction in a swine model of chronic myocardial infarction. *J Stem Cell Res Ther.* 2016;6:326.
42. Sun Y. Acupuncture prevents the atrial fibrillation through improving remodeling of atrial appendage in rats. *J Tradi Med Clin Natur.* 2016;5:186.
43. Ghonimi WAM. Moderator bands (*Trabecula septomarginalis*) of mature buffalo (*Bos bubalis* L.) with special emphasis on the structure and distribution of the purkinje cardiomyocytes: Histological and histochemical. *Cell Dev Biol.* 2015;4:165.
44. Sahito RGA, et al. Gelatine microspheres support direct intramyocardial delivery of induced pluripotent stem cell-derived cardiomyocytes. *J Stem Cell Res Ther.* 2015;5:306.
45. Ajdukovic J. The role of NLRP3 inflammasome in cardiovascular diseases. *J Clin Exp Cardiol.* 2015;6:399.
46. Chen DM, et al. SWI/SNF chromatin remodeling complex in regulating mesenchymal stem cell lineage specification. *J Tissue Sci Eng.* 2015;6:3.
47. Nonaka D, et al. Intracellular renin protects cardiomyocytes from ischemic injury in diabetic heart. *J Cardiovasc Dis Diagn.* 2015;3:214.
48. Ghonimi W, et al. Sinu-atrial node of mature dromedary camel heart (*Camelus dromedarius*) with special emphasis on the atrial purkinje like cardiomyocytes. *J Cytol Histol.* 2015;6:319.
49. Deleskog A and Ostenson CG. Vitamin D and aspects of cardiovascular disease. *J Diabetes Metab* 2015;6:545.
50. Wang H. Pluripotent stem cells and repair of myocardial infarction. *Trop Med Surg.* 2015.
51. Manne NDPK, et al. Molecular mechanisms of age-related cardiac hypertrophy in the F344XBN rat model. *J Clin Exp Cardiol.* 2014;5:353.
52. Schanz S, et al. Genetically-defined DNA repair capacity determines the extent of DNA damage accumulation in healthy mouse tissues after very low doses of ionizing radiation. *J Carcinog Mutagen* 2014;5:196.
53. Skopalik J, et al. Formation of cell-to-cell connection between bone marrow cells and isolated rat cardiomyocytes in a co-cultivation model. *J Cell Sci Ther.* 2014;5:185.
54. Arikawa M, et al. Donepezil, therapeutic acetylcholinesterase inhibitor, prevents the progression of ventricular dysfunction by promoting myocardial glucose utilization in rat model of chronic heart failure following myocardial infarction. *Cardiol Pharmacol.* 2014;3:121.
55. Ghonimi W, et al. Left ventricles of the mature camel heart (*Camelus dromedaries*) with special references to the structure and distribution of the purkinje cardiomyocytes: Microanatomy. *J Veterinar Sci Technol.* 2014;5:183.
56. Amuzescu B, et al. Novel automated patch-clamp assays on stem cell-derived cardiomyocytes: Will they standardize *in vitro* pharmacology and arrhythmia research? *J Phys Chem Biophys.* 2014;4:153.
57. Satoh H and Nishida S (2014) Cardio-electropharmacology and vasodilating mechanisms of quercetin. *Med Chem (Los Angeles).* 2014;4:523.
58. Ghonimi W, et al. Left ventricles of the mature camel heart (*Camelus dromedaries*) with special references to the structure and distribution of the purkinje cardiomyocytes: Microanatomy. *J Cytol Histol.* 2014;5:247.
59. Ghonimi W, et al. Papillary muscles in the heart ventricles of the mature dromedary camel (*Camelus dromedaries*) with special references to the chordae tendineae: Gross and microanatomy. *J Cytol Histol.* 2014;5:243.
60. Dube DK, et al. Does nebulin make tropomyosin less dynamic in mature myofibrils in cross-striated myocytes? *J Cytol Histol.* 2014;5:239.
61. Almarzooqi S, et al. Modulation of cardiomyocyte and hepatocyte bioenergetics by biguanides. *J Clin Toxicol.* 2014;4:203.
62. Wilson GJ, et al. Remote ischemic preconditioning cardio-protection via enhanced cell volume regulation requires activation of swelling-activated chloride (Cl<sup>-</sup> Swell) channels. *Cardiol Pharmacol.* 2014;3:117.

63. Johnson R, et al. Recommendations for short term culturing of viable rod shaped rat cardiomyocytes. *Bioenergetics*. 2014;3:116.
64. Meng X. Transdifferentiation during heart regeneration. *J Stem Cell Res Ther*. 2014;4:188.
65. Baban B, et al. Pressure overload promotes HMGB1 signaling in the ischemic-reperfused heart. *J Clin Exp Cardiol*. 2014;5:286.
66. Cardiomyocyte-specific estrogen receptor alpha increases angiogenesis, lymphangiogenesis and reduces fibrosis in the female mouse heart post-myocardial infarction. *J Cell Sci Ther*. 2014;5:153.
67. Pravin D, et al. Mesenchymal stem cell transplantation: New avenues for stem cell therapies. *J Transplant Technol Res*. 2013;3:122.
68. Sun J, et al. Cardioprotective role of caveolae in ischemia-reperfusion injury. *Transl Med*. 2013;3:114.
69. Sekaran T, et al. Exploring the neural reprogrammome using bioinformatics approaches. *J Stem Cell Res Ther*. 2013;3:146.
70. La H, et al. Personalized medicine in oncology and companion diagnostics: Development and challenges. *Transl Med*. 2013;3:113.
71. Acosta SA, et al. Human umbilical cord blood for transplantation therapy in myocardial infarction. *J Stem Cell Res Ther*. 2013;S4:005.
72. Hsiao LC and Carr C (2013) Endogenous cardiac stem cell therapy for ischemic heart failure. *J Clin Exp Cardiol*. 2013;S11-007.
73. Malecki M. Improved targeting and enhanced retention of the human, autologous, fibroblast-derived, induced, pluripotent stem cells to the sarcomeres of the infarcted myocardium with the aid of the bioengineered, heterospecific, tetravalent antibodies. *J Stem Cell Res Ther*. 2013;3:138.
74. Castillo A, et al. Docosahexaenoic acid inhibits protein kinase C translocation/activation and cardiac hypertrophy in rat cardiomyocytes. *J Mol Genet Med*. 2005;1:6.
75. Hassan AU, et al. Stem cell therapy in myocardial infarction: Latest trends. *J Cytol Histol*. 2012;3:162.
76. Oncostatin M induces FGF23 expression in cardiomyocytes. *J Clin Exp Cardiol*. 2013;S9-003.
77. Induction of hypoxia inducible factor rather than modulation of collagen metabolism improves cardiac function and reduces left ventricular hypertrophy after aortocaval shunt in rats. *J Clin Exp Cardiol*. 2013;4:227.
78. Namas W. High SYNTAX score and long-term outcome following percutaneous coronary intervention with drug-eluting stents: Insights from the leader's trial. *Transl Med*. 2013;3:e112.
79. Cellular pathways of death and survival in acute myocardial infarction. *J Clin Exp Cardiol*. 2012;S6-003.
80. He X and Ma Q. Disruption of Nrf2 synergizes with high glucose to cause heightened myocardial oxidative stress and severe cardiomyopathy in diabetic mice. *J Diabetes Metab*. 2012;S7-002.
81. Jonker MK, et al. Genetically engineered mesenchymal stem cells influence gene expression in donor cardiomyocytes and the recipient heart. *J Stem Cell Res Ther*. 2012;S1-005.
82. Aoyagi T and Matsui T. The cardiomyocyte as a source of cytokines in cardiac injury. *J Cell Sci Ther*. 2012;S5-003.
83. Nomura F, et al. Label-free shape-based selection of cardiomyocytes with on-chip imaging cell sorting system. *J Bioprocess Biotechniq*. S3-003.
84. Analysis of different natural and synthetic biomaterials to support cardiomyocyte growth. *J Clin Exp Cardiol*. 2011;S4-002.
85. Faulkner A and Madeddu P. Stem cell therapy: A new approach for treatment of myocardial infarction. *J Stem Cell Res Ther*. 2012;S1-004.
86. Natanson A, et al.  $\alpha_2$ -adrenergic receptor signaling regulates rAAV transduction through calcineurin in heart muscle cells. *J Genet Syndr Gene Ther*. 2010;1:102.
87. Jason M et al. A review of the basis of autologous stem cell therapy for coronary artery disease. *J Clin Exp Cardiol*. 2011;2:130.
88. Mavrogeni S, et al. Diffuse, subendocardial vasculitis identified by cardiovascular magnetic resonance. Use of images to learn pathophysiology. *J Vasc*. 2016;2:106.
89. Heke M and Klein HM. Endogenous laser induced ventricular enhancement (ELIVE?) therapy: A new paradigm for treating heart failure? *J Stem Cell Res Ther*. 2014;4:236.
90. Adhyapak SM, et al. Rapid quantification of mean myocardial wall velocity in ischemic cardiomyopathy by cardiac magnetic resonance: An index of cardiac functional abnormalities during the cardiac cycle. *J Clin Exp Cardiol*. 2014;5:288.
91. Shudo Y, et al. Promising therapeutic effects of cell sheet implantation with a pedicle omentum flap to enhance the angiogenic response to ischemic cardiomyopathy. *J Stem Cell Res Ther*. 2014;4:159.

92. Complicative Extraction Lead of an Infected Pacemaker. OMICS J Radiology. 2013;2:146.
93. End of Life in Stage Heart Failure in Elderly Individuals. J Palliat Care Med. 2013;3:157.
94. Mavrogeni S, et al. Evaluation of sudden cardiac death, using cardiovascular magnetic resonance. J Clin Exp Cardiol. 2012;S10-005.